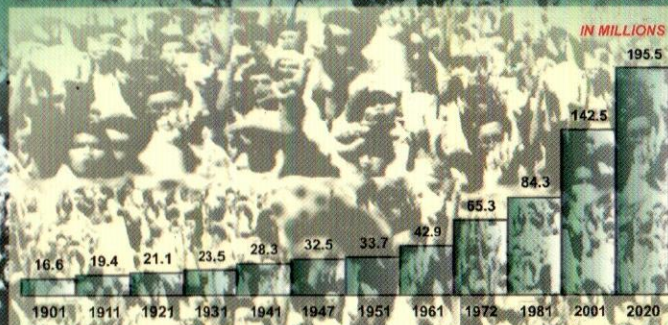


POPULATION GROWTH AND ITS IMPLICATIONS



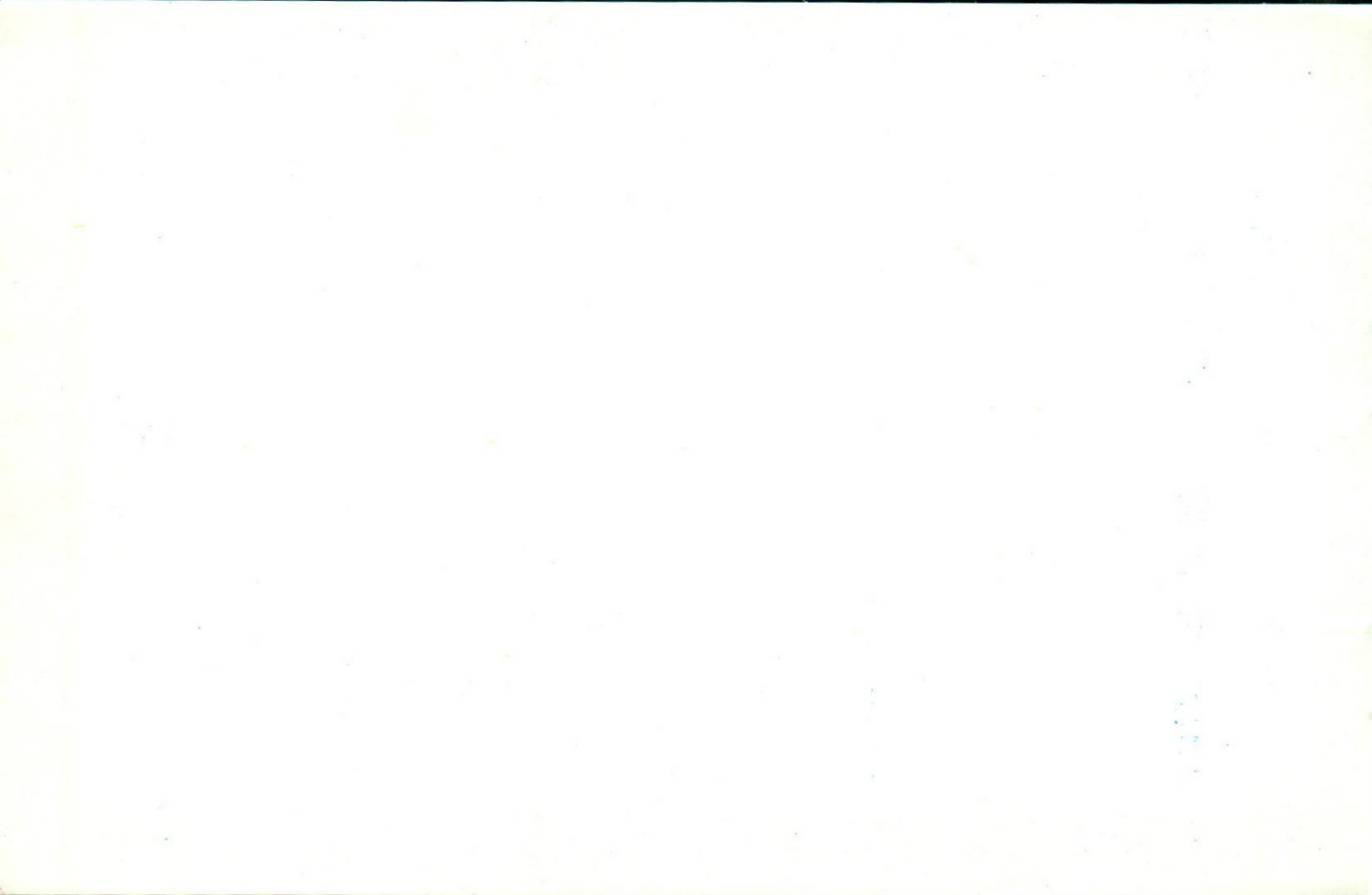
**NATIONAL INSTITUTE OF POPULATION STUDIES
ISLAMABAD**

July, 2001



**NATIONAL INSTITUTE OF POPULATION STUDIES
ISLAMABAD**

JULY, 2001



CONTENTS

- **Population Profile**
- **Impact of Population Programme**
- **Implications of Population Growth**

POPULATION PROFILE

TECHNICAL NOTE

How Population Grows?

World

$B - D$ in a year per 1000 Population

Suppose $40 - 10 = 3.0$ percent growth rate per annum

Country

$B - D + Im - Em$

Province or District within each country: $B - D + Im - Em + In - Out$

Urban Area within each country: $B - D + Im - Em + In - Out + Expansion$

Suppose the population grows at 3 percent per annum, what does it mean?

It means the population would double in 23 years. How?

The formula is very simple: Just divide 70 years by the rate of growth: $70 / 3 = 23$ years

It may be called the **Law of Seventy**

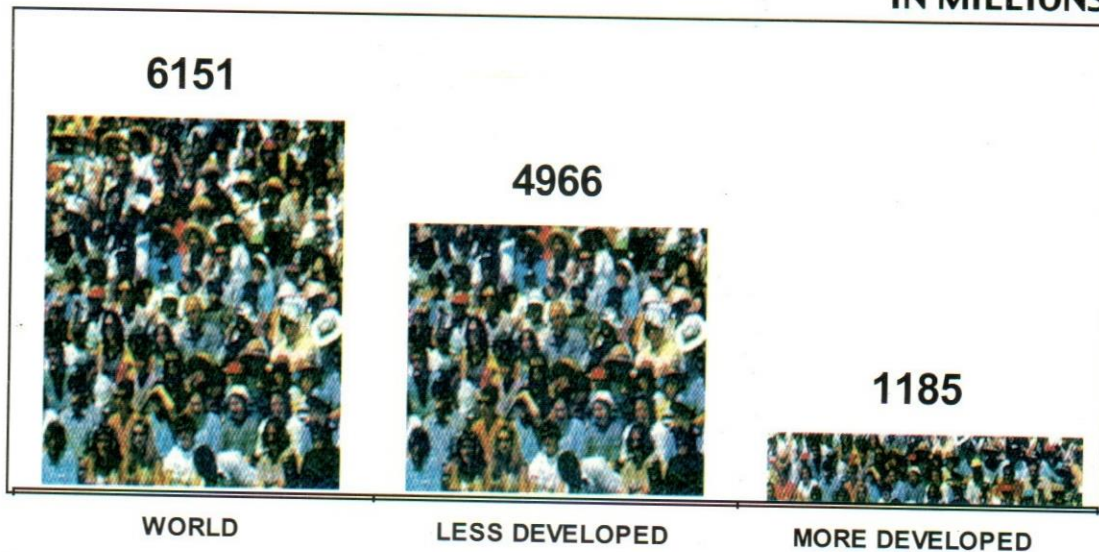
Note:

B = Births
 Im = Immigration

D = Deaths
 Em = Emigration

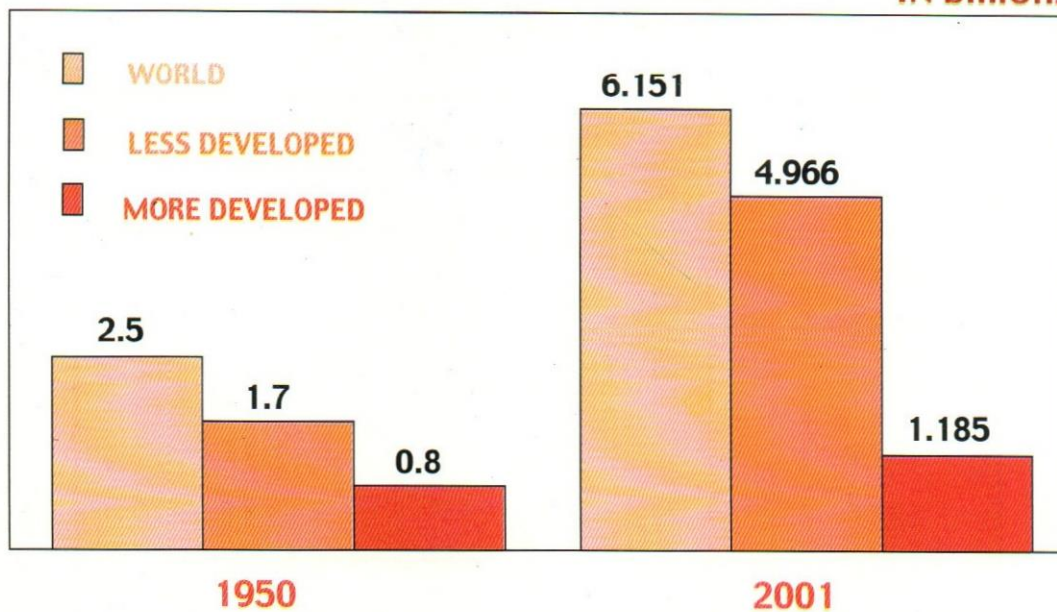
POPULATION 2001

IN MILLIONS



POPULATION TRENDS

IN billions



TIME TAKEN TO ADD

ONE BILLION

YEAR	WORLD POPULATION	YEARS
1804	1	---
1927	2	123
1960	3	33
1974	4	13
1987	5	12
1999	6	12

POPULATION AND GNP/CAPITA

REGIONS	POPULATION (MILLION) 2001	GNP/ CAPITA (\$) 1998
WORLD	6151	4,890
MORE DEVELOPED	1185	19,480
LESS DEVELOPED	4966	1,260

PAKISTAN

SHARE OF THE WORLD
2001

AREA

(0.796) 0.6%

(Million Sq. Km)

POPULATION

(142.5) 2.3%

(Million)

POPULATION, RATE OF GROWTH AND DOUBLING TIME, 2001

REGIONS/ COUNTRIES	POPULATION (MILLION)	GROWTH RATE (PERCENT)	DOUBLING TIME (YEARS)
WORLD	6151	1.4	50
MORE DEVELOPED	1185	0.1	700
LESS DEVELOPED	4966	1.7	41
PAKISTAN	142.5	2.1	33
BANGLADESH	130	1.7	41
IRAN	68	1.4	50
INDIA	1021	1.6	44
INDONESIA	215	1.3	54

PAKISTAN'S POPULATION RANK ORDER IN THE WORLD

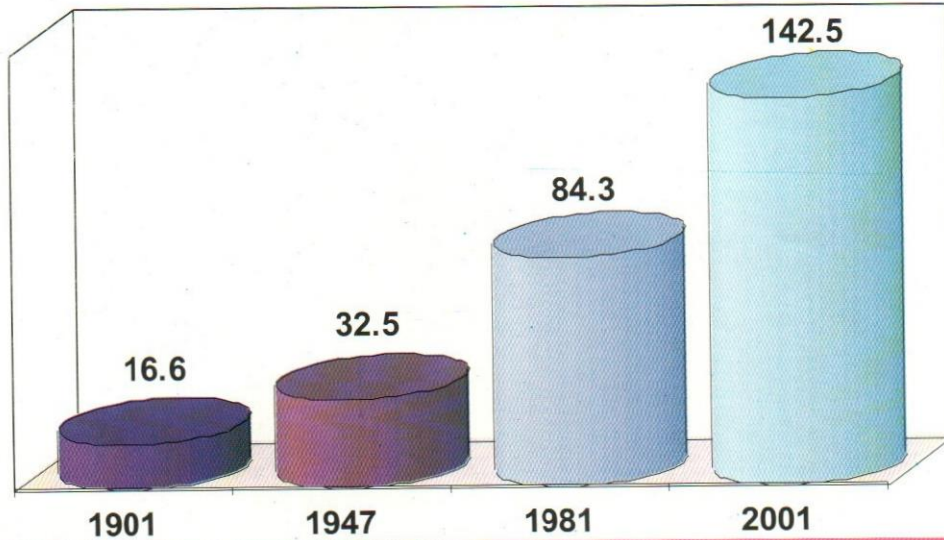
YEAR	RANK	POPULATION (Million)
1950	14	33.0
2001	7*	142.5

* AFTER

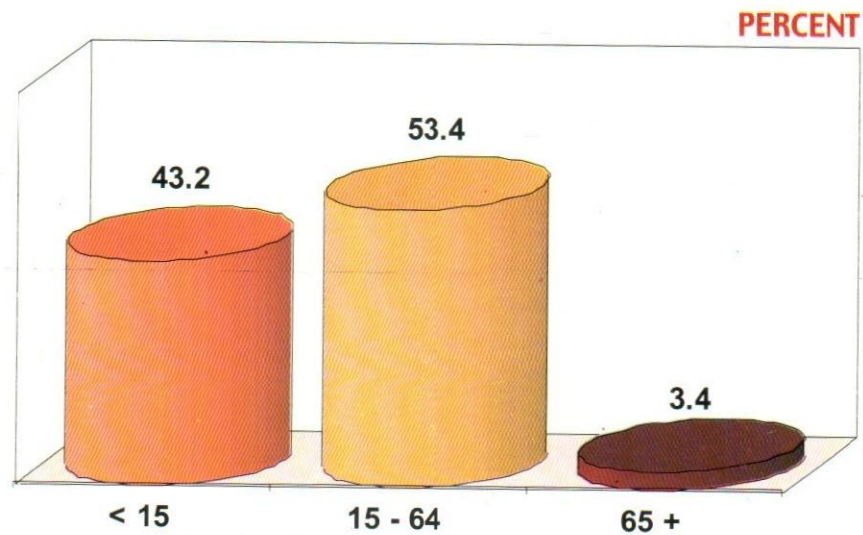
CHINA, INDIA, USA, INDONESIA, BRAZIL AND RUSSIA HAVING SURPASSED
JAPAN, BANGLADESH, NIGERIA, ETC.

POPULATION SIZE OF PAKISTAN

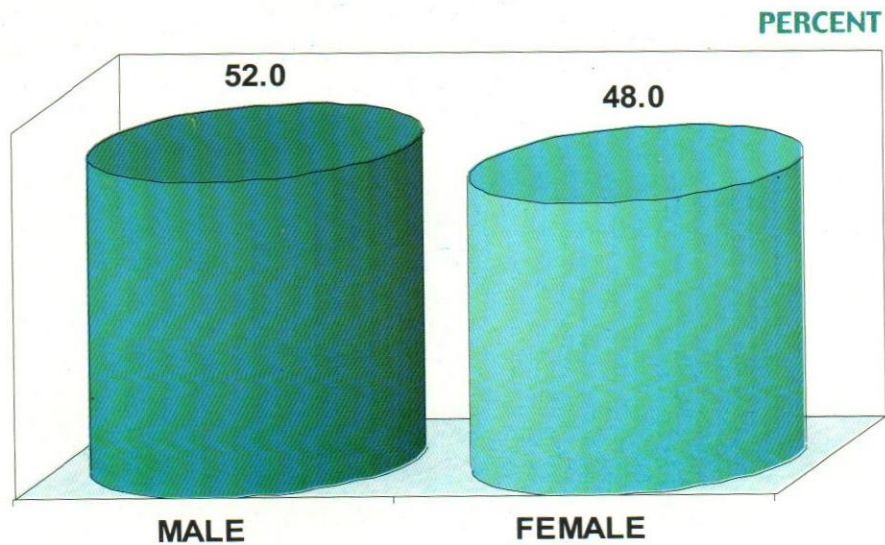
IN MILLIONS



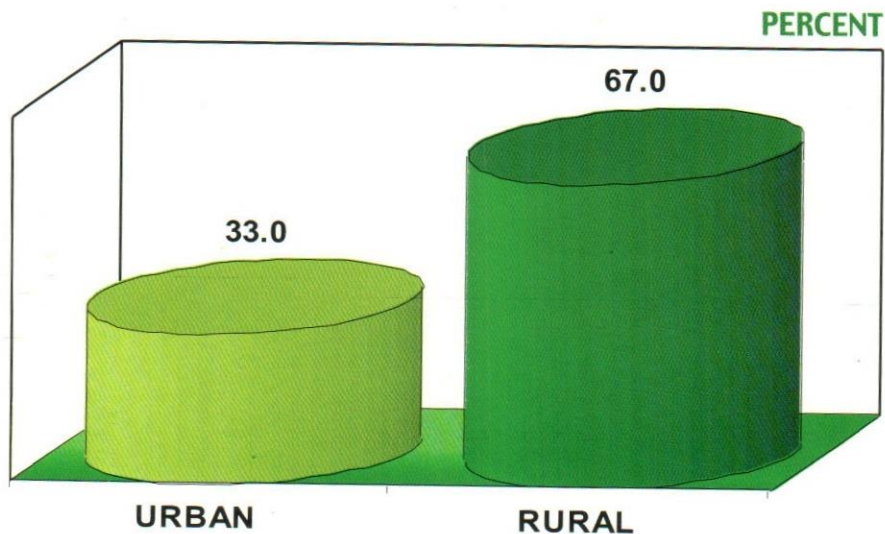
POPULATION DISTRIBUTION BY AGE, 1998



POPULATION DISTRIBUTION BY SEX, 1998



POPULATION DISTRIBUTION BY PLACE OF RESIDENCE, 1998



POPULATION GROWTH RATE

PERIOD	GR (%)
• 1951 - 61	2.45
• 1961 - 72	3.66
• 1972 - 81	3.05
• 1981 - 98	2.61
• 2001	2.1

BIRTHS DURING 2000

- IN ONE YEAR 4,300,000
- PER MONTH 358,333
- PER DAY 11,781
- PER MINUTE 8

DEATHS DURING 2000

- IN ONE YEAR 1,200,000
- PER MONTH 100,000
- PER DAY 3,288
- PER MINUTE 2

NET ADDITION IN 2000

- IN ONE YEAR 3,100,000
- PER MONTH 2,58,333
- PER DAY 8,493
- PER MINUTE 6

.... the addition of **3.1** million
means **adding** the population of:

ALBANIA

OR

NEWZEALAND

OR

FAISALABAD + MULTAN

IMPACT OF POPULATION PROGRAMME

POPULATION WELFARE SERVICE OUTLETS 1991 – 2001

TYPE OF OUTLETS	1991	2001
F AMILY W ELFARE C ENTRES	1290	1688
R EPRODUCTIVE H EALTH S ERVICE C ENTRES	79	106
M OBILE S ERVICE U NITS	130	131
V ILLAGE B ASED FP W ORKERS	----	13084
R EGISTERED M EDICAL P RACTITIONERS	2500	21040

**POPULATION PARAMETERS
(1991 AND 2001)**

PARAMETER	1991	2001
KNOWLEDGE (%)	78	96
USE OF CONTRACEPTIVES (%)	12	30
TOTAL FERTILITY RATE	5.4	4.8

**POPULATION GROWTH RATE (PGR) AND
CONTRACEPTIVE PREVALENCE RATE
(CPR), 2001**

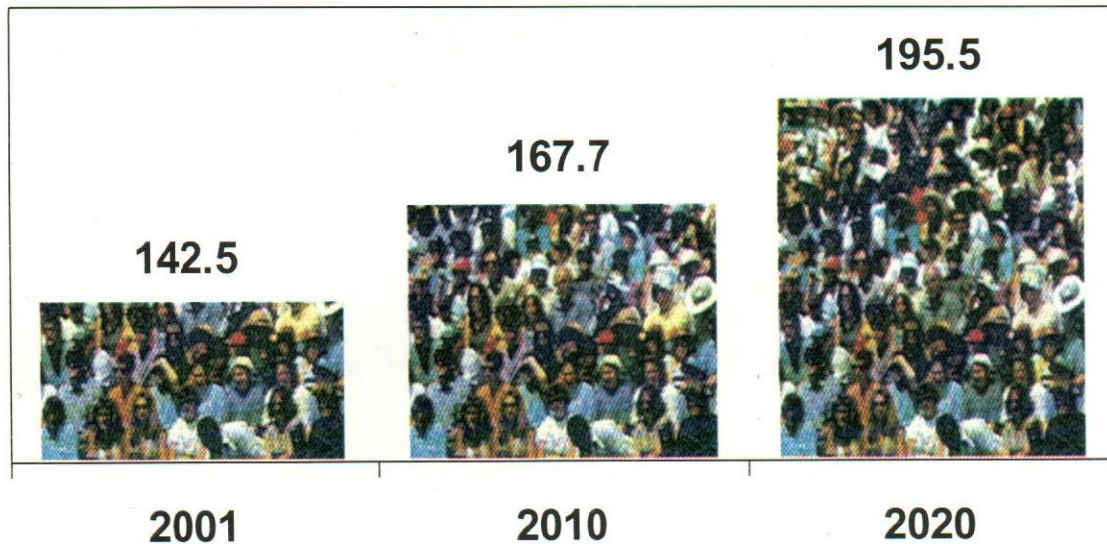
REGIONS	PGR (%)	CPR (%)
WORLD	1.4	60
MORE DEVELOPED	0.1	74
LESS DEVELOPED	1.7	56
ASIA	1.5	47

**POPULATION GROWTH RATE (PGR),
CONTRACEPTIVE PREVALENCE RATE (CPR) AND
TOTAL FERTILITY RATE (TFR), 2001**

MUSLIM COUNTRIES	TFR	PGR (%)	CPR (%)
EGYPT	3.3	2.0	55
MOROCCO	3.1	1.7	59
TURKEY	2.4	1.4	64
IRAN	2.9	1.4	73
INDONESIA	2.4	1.3	57
MALAYSIA	3.1	2.0	48
BANGLADESH	3.3	1.7	49
PAKISTAN	4.8	2.1	30

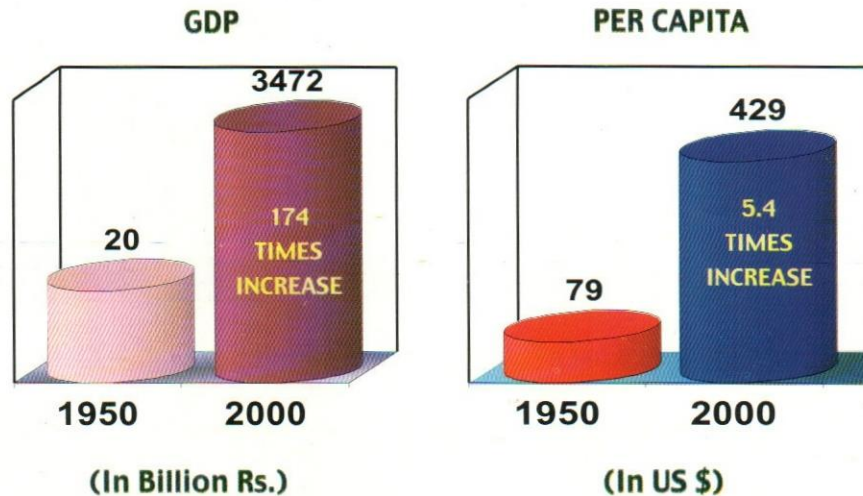
PROJECTED POPULATION SCENARIO OF PAKISTAN, 2001 – 2020

IN MILLIONS



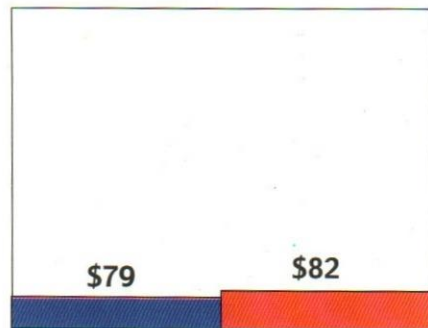
IMPLICATIONS OF POPULATION GROWTH

GDP AND PER CAPITA INCOME OF PAKISTAN 1950 – 2001



PER CAPITA INCOME OF PAKISTAN AND S. KOREA 1950 – 2001

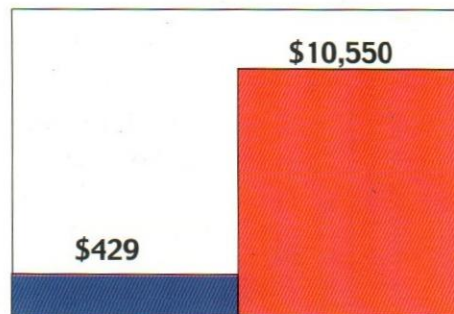
1950



PAKISTAN

S. KOREA

2001



PAKISTAN

S. KOREA

Population (M) 33

20

142.5

47.7

Growth Rate (%) 1.8

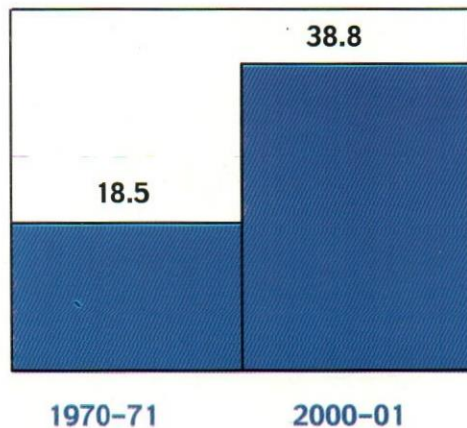
3.0

2.1

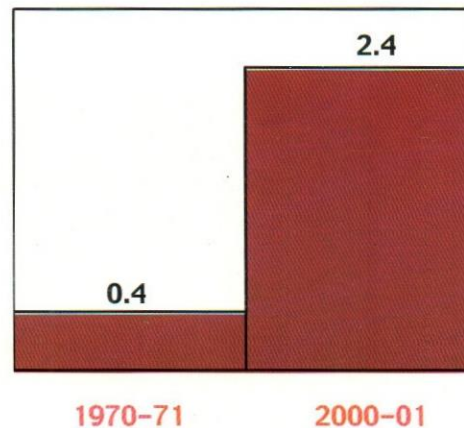
0.8

EMPLOYMENT AND UNEMPLOYMENT (PERSONS IN MILLION)

EMPLOYED

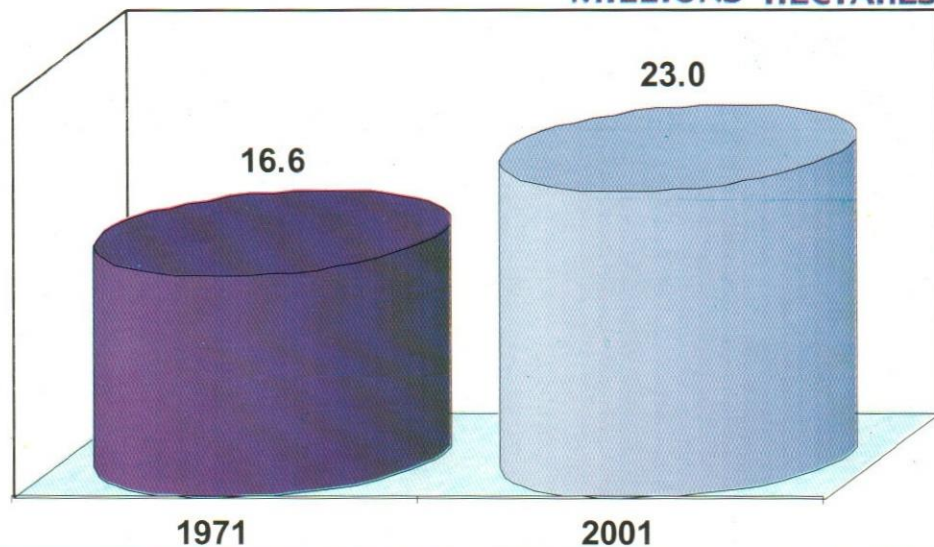


UNEMPLOYED



LAND UNDER CULTIVATION 1971 - 2000

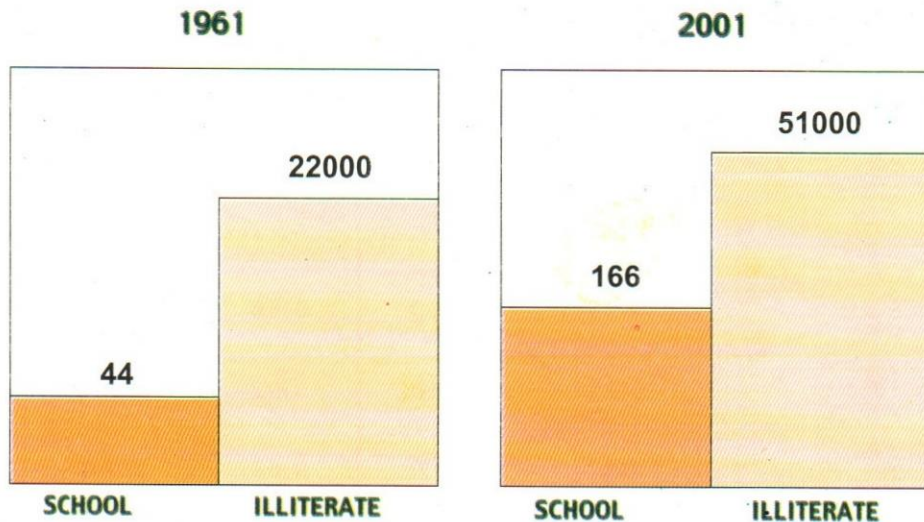
MILLIONS HECTARES



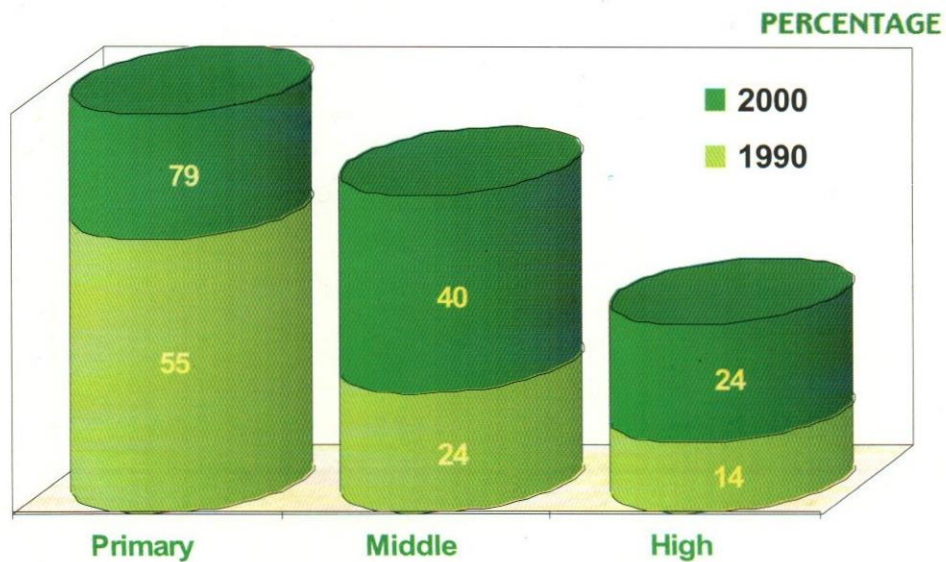
NUMBER OF PRIVATE FARMS BY SIZE

FARM SIZE		1980		1990	
(Acres)		NUMBER (Million)	%	NUMBER (Million)	%
Under 3 Acres		2.07	50.90	3.25	64.10
3 - 5		0.92	22.60	0.86	17.00
5 - 10		0.71	17.40	0.62	12.20
Total		4.07	100.00	4.73	100.00

**PRIMARY SCHOOLS AND ILLITERATE
POPULATION 1961 – 2001
(In Thousand)**



FEMALE PARTICIPATION RATE IN EDUCATION 1990 – 2000



HEALTH FACILITIES (1991 – 2001)

IN THOUSANDS

	1991	2001
HEALTH OUTLETS	10	12
DOCTORS	52	92
NURSES	17	38
HOSPITAL BEDS	73	94

CONTD...

POSITION IN 2001

• POPULATION PER DOCTOR	1,552
• POPULATION PER NURSE	3,788
• POPULATION PER HOSPITAL BED	1,518
• INFANT MORTALITY RATE (PER 1000 BIRTHS)	85
• MATERNAL MORTALITY RATE (PER 100,000 BIRTHS)	350
• DELIVERIES AT HOME (%)	76

MATERNAL AND INFANT MORTALITY RATES

REGIONS/ COUNTRIES	IMR	MMR
WORLD	57	460
MORE DEVELOPED	8	10
LESS DEVELOPED	62	500
PAKISTAN	85	350
BANGLADESH	82	850
EGYPT	52	170
INDONESIA	46	650
IRAN	26	120
TURKEY	43	180

OTHER HARD FACTS

(MILLION)

POPULATION LIVING BELOW POVERTY LINE	48
POPULATION WITH NO ACCESS TO SAFE DRINKING WATER	54
POPULATION WITH ONE ROOM HOUSES	71
POPULATION IN KATCHI ABADIES IN URBAN AREAS	17
POPULATION WITH NO SANITATION	82

REQUIREMENTS BY 2010

	2000	2010	Net Requirement
• HEALTH FACILITIES	12300	15357	3057
• PRIMARY SCHOOLS	170500	210209	39709
• HOUSING UNITS (M)	19.7	24.3	4.6
• EMPLOYMENT (M)	37.0	45.6	8.6
• GNP (BILLION RS.)	3120	3842	722
(Just to maintain present per capita)			

EXPECTED IMPORTS IN 2010

IMPORT	2000	2010
(MILLION TONES)		
• TEA	0.083	0.102
• EDIBLE OIL	0.794	0.978
• PETROL/PETROLIUM	11.690	14.393
PRODUCTS		

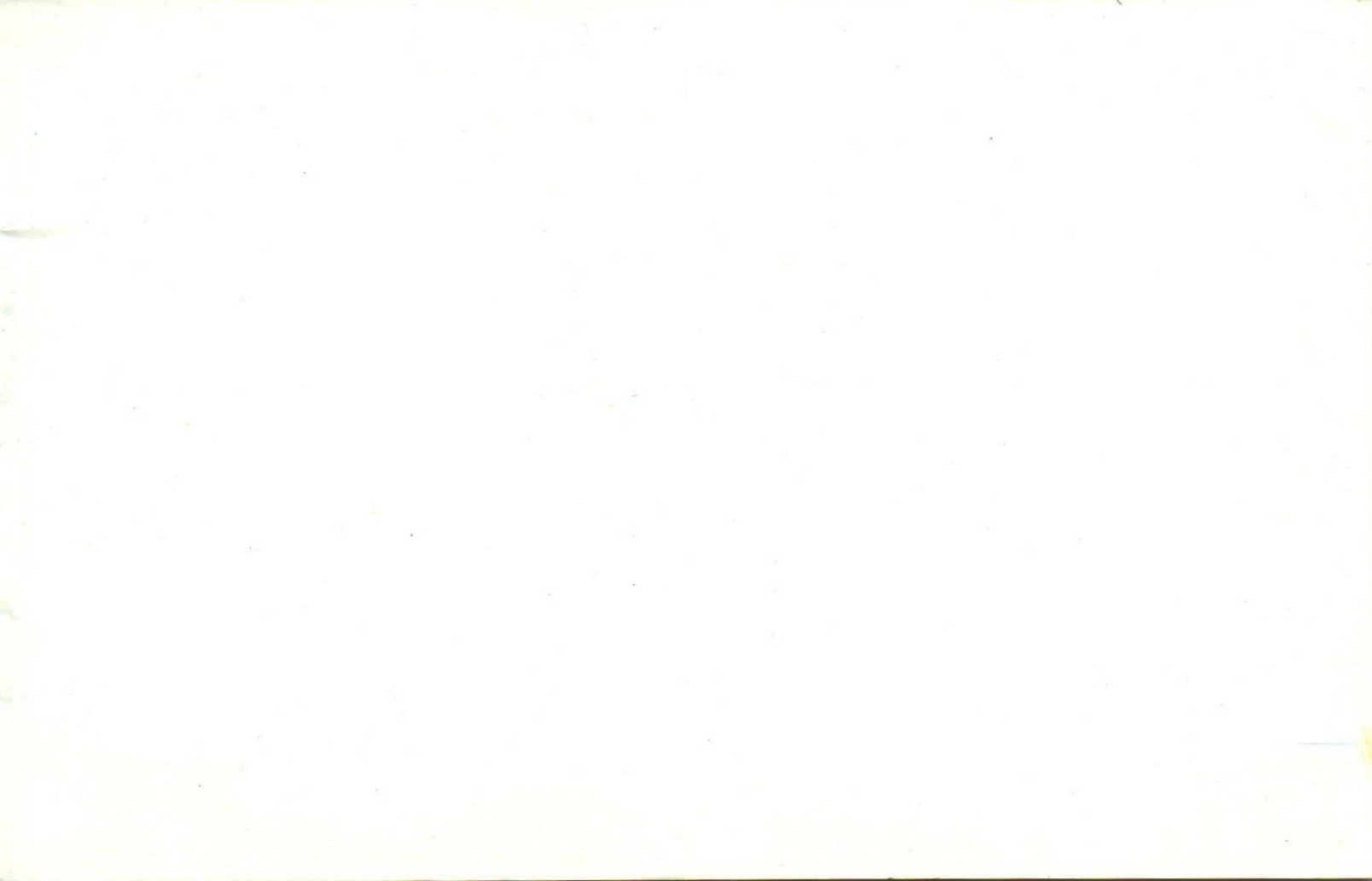
SUMMARY IMPLICATIONS

SHORTAGE OF :

- | | |
|--------------------------|----------------|
| I EDUCATIONAL FACILITIES | I LIVING SPACE |
| I HEALTH SERVICES | I ARABLE LAND |
| I HOUSING UNITS | I CLEAN WATER |
| I FOOD | |

INCREASE IN:

- | | |
|----------------------------|-----------------|
| I UNEMPLOYMENT | I OVER CROWDING |
| I LAND FRAGMENTATION | I KATCHI ABADIS |
| I IMPORT OF FOOD etc. | I POVERTY |
| I ENVIRONMENTAL PROBLEMS | I UNREST |
| I CONGESTION IN HOUSEHOLDS | I CRIME |





NATIONAL INSTITUTE OF POPULATION STUDIES (NIPS)

NIPS aspires to attain prominence as "Centre of Excellence", recognizable nationally and internationally for reliability and high quality of its research, training and human resources development, monitoring and evaluation in the areas of population and development. Conceived to fulfill explicit aims, NIPS is set out to play a key role in the dynamics of national population and its complexities. Its canvas of activities is challengingly broad embracing socio-economic dimensions of a determined young nation.

An autonomous organisation with a board of Governors and an Advisory Committee of experts, NIPS's charter assign to it the responsibility of undertaking interdisciplinary research, impact studies of the population welfare programme, dissemination of information, training, special surveys and action-oriented research. It acts to interlink monitoring or development strategies with the changing demographic situations. Thus at macro level NIPS concerns itself with population and development; policy and programme evaluation; social and behavioral change, surveys and action-oriented research pertaining to population welfare undertaken by both the public and private sector.